

1

2

3

4

5

6

A

A

B


B

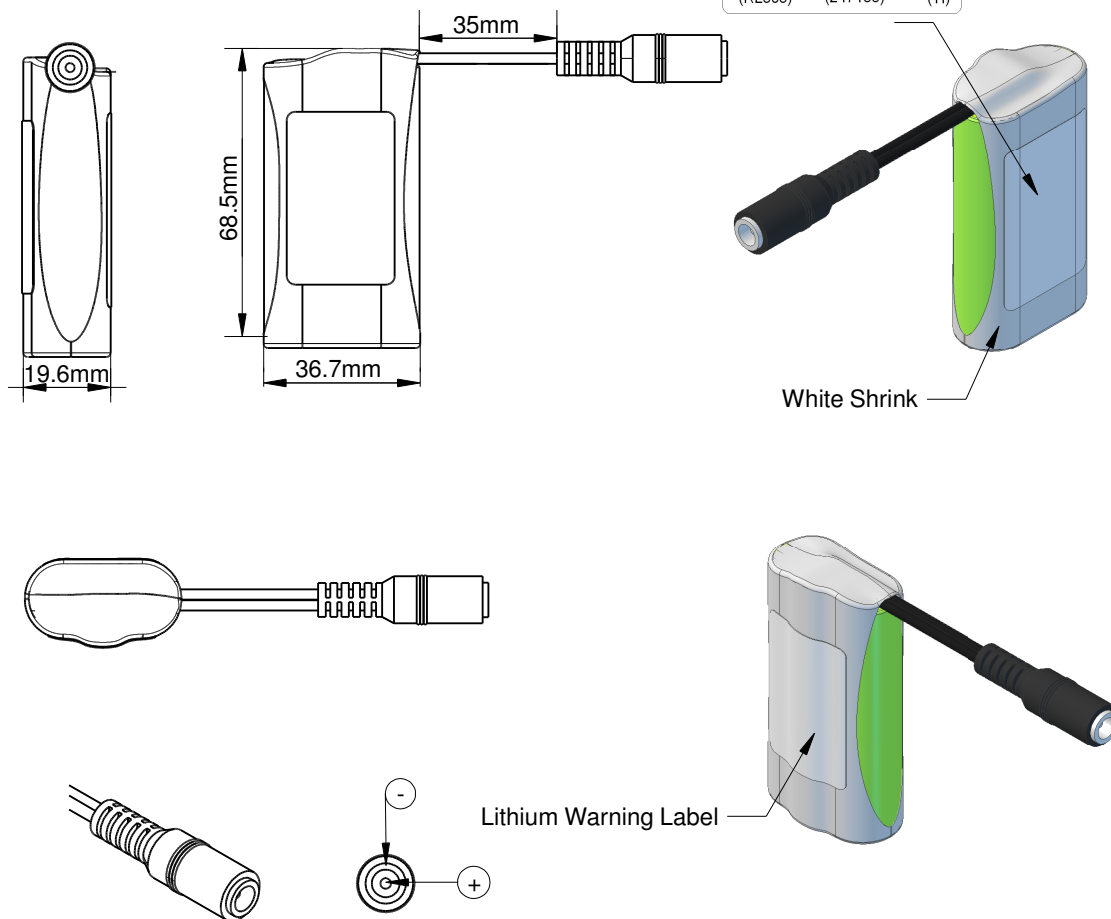
C

C

D

D


PANASONIC
 RECHARGEABLE
LICB-18650-1S2P-HC-F
 3.6V 6.7Ah 24.12Wh Lilon
 Assembled in Australia
 (RL805) (247185) (TI)



Technical Data

Safety Board (PCM)

PCM	MIPCM-1SXP6AL
Over Charge Detection Voltage	4.30V ± 0.05V
Over Charge Release Voltage	4.10V ± 0.05V
Over Discharge Detection Voltage	2.40V ± 0.1V
Over Discharge Release Voltage	3.0V ± 0.1V
Over Current Detection Current	8.0A ± 1.0 A
Max Discharge Current	6A
Short Circuit Protection	External Short Circuit
Protection Circuit Resistance	≤40mΩ
PTC Resettable Fuse	N/A
Thermistor	N/A
Chemistry	Lilon
Configuration	1S2P
Voltage	3.6V
Capacity	6.7Ah
Energy	24.12Wh
Weight	104g
Rated Discharge	1.28mA (C/5)
Max Discharge Continuous	PCM: 6A
	Cell: 6A (PCM Limit)
Charge Rate	3.25A
Operating Temperature Range	Charge: 10 - 45°C
	Discharge: -20 - 60°C
Charge Voltage	4.2V
Discharge End Voltage	3V
Connector	CE180 2.1mm(ID) x 5.5mm(OD) DC Jack
Suits Mating Connector	P4215 DC Plug Male 2.1mm(ID) x 5.5mm(OD) Jack


Master Instruments

This drawing and the designs
 so represented are the
 copyright property of Master
 Instruments Pty Ltd. The
 drawing shall not be copied,
 loaned or issued without the
 express written permission
 of a duly authorised
 representative of Master
 Instruments Pty Ltd.

PART NO	RL805	STOCK CODE	88003-102	RevNo	0
CELL TYPE	NCR18650B	RECOMMENDED CHARGER	3P10-L1004-2.1mm or FY0422000	DATE	18/12/15
				PAGE	1 OF 1

1

2

3

6