

1

2

3

4

5


6

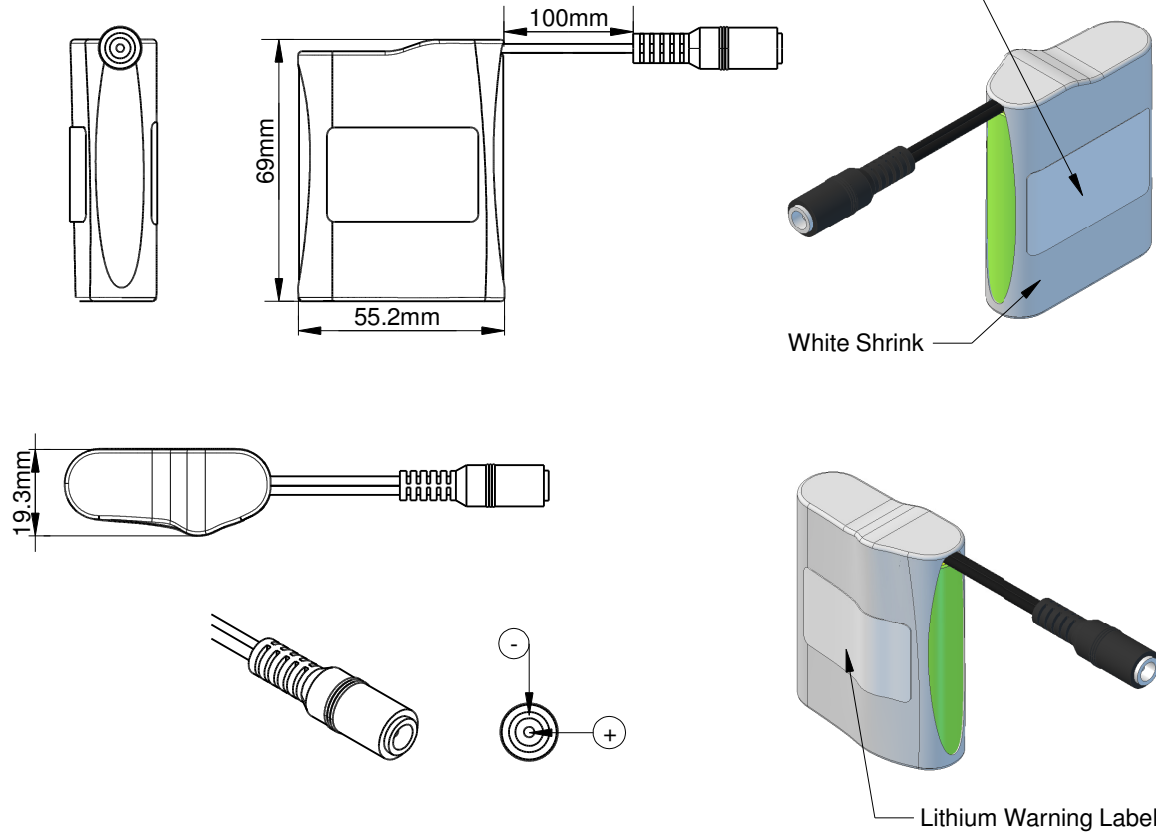
A

B

C

D


PANASONIC
 RECHARGEABLE
LICB-18650-1S3P-HC-F
 3.6V 10.05Ah 36.18Wh Lilon
 Assembled in Australia
 (RL806) (247186) (TI)



Technical Data

Safety Board (PCM)

PCM	MIPCM-1SXP6AL
Over Charge Detection Voltage	4.30V ± 0.05V
Over Charge Release Voltage	4.10V ± 0.05V
Over Discharge Detection Voltage	2.40V ± 0.10V
Over Discharge Release Voltage	3.0V ± 0.10V
Over Current Detection Current	8.0A ± 1.0A
Max Discharge Current	6A
Short Circuit Protection	External Short Circuit
Protection Circuit Resistance	≤40mΩ
PTC Resettable Fuse	N/A
Thermistor	N/A
Chemistry	Lilon
Configuration	1S3P
Voltage	3.6V
Capacity	10.05Ah
Energy	36.18Wh
Weight	154g
Rated Discharge	1.95A (C/5)
Max Discharge Continuous	PCM: 6A
	Cell: 6A (PCM Limit)
Charge Rate	4.875A
Operating Temperature Range	Charge: 10 - 45°C
	Discharge: -20 - 60°C
Charge Voltage	4.2V
Discharge End Voltage	3V
Connector	CE180 2.1mm(ID) x 5.5mm(OD) Jack
Suits Mating Connector	P4215 DC Plug Male 2.1mm(ID) x 5.5mm(OD)


Master Instruments

This drawing and the designs
 so represented are the
 copyright property of Master
 Instruments Pty Ltd. The
 drawing shall not be copied,
 loaned or issued without the
 express written permission
 of a duly authorised
 representative of Master
 Instruments Pty Ltd.

PART NO	RL806	STOCK CODE	88003-103	RevNo	0
CELL TYPE	NCR18650B	RECOMMENDED CHARGER	3P10-L1004-2.1mm or FY0422000	DATE	21/01/16
				PAGE	1 OF 1

1

2

3

6