

1

2

3

4

5

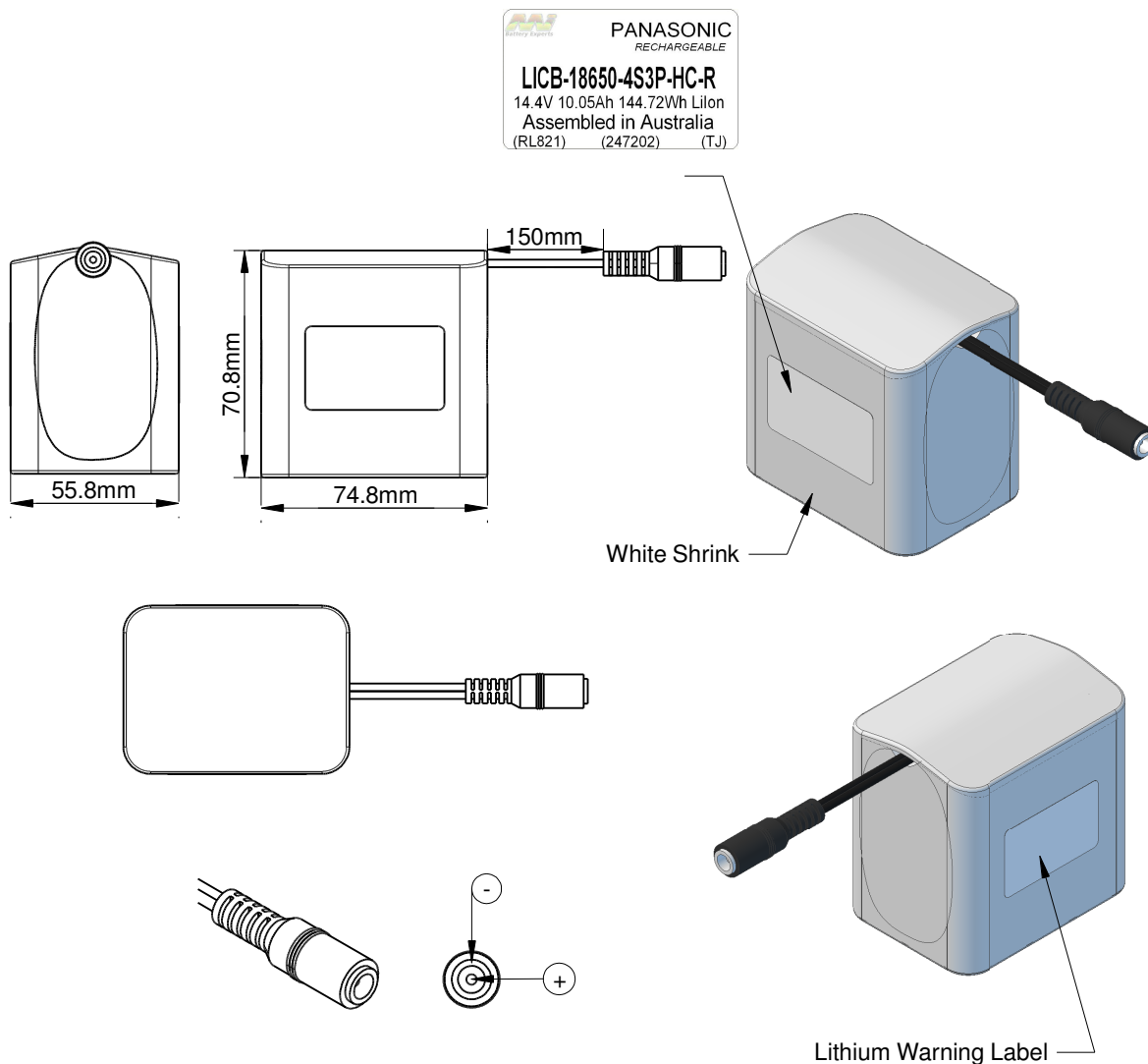
6

A

B

C

D



### Technical Data

#### Safety Board (PCM)

PCM	MIPCM-4SXP7A
Over Charge Detection Voltage	4.25V ± 0.025V
Over Charge Release Voltage	4.15V ± 0.05V
Over Discharge Detection Voltage	2.0V ± 0.08V
Over Discharge Release Voltage	3.0V ± 0.10V
Over Current Detection Current	15A ± 2A
Max Discharge Current	7A
Short Circuit Protection	External Short Circuit
Protection Circuit Resistance	≤50mΩ
PTC Resettable Fuse	N/A
Thermistor	N/A
Chemistry	Lilon
Configuration	4S3P
Voltage	14.4V
Capacity	10.05Ah
Energy	144.72Wh
Weight	580g
Rated Discharge	1.92A (C/5)
Max Discharge Continuous	PCM: 7A
	Cell: 7A (PCM Limit)
Charge Rate	4.875A
Operating Temperature Range	Charge: 10 - 45°C
	Discharge: -20 - 60°C
Charge Voltage	16.8V
Discharge End Voltage	12V
Connector	CE180 2.1mmID x 5.5mmOD DC Plug
Suits Mating Connector	P4215 DC Plug Male 2.1mmID x 5.5mmOD Jack

**Mi**  
**Master Instruments**

This drawing and the designs so represented are the copyright property of Master Instruments Pty Ltd. The drawing shall not be copied, loaned or issued without the express written permission of a duly authorised representative of Master Instruments Pty Ltd.

PART NO	RL821	STOCK CODE	88003-118	RevNo	0
CELL TYPE	NCR18650B	RECOMMENDED CHARGER	3P10-L1016 or FY170xxx	DATE	11/12/15
				PAGE	1 OF 1

1

2

3

6