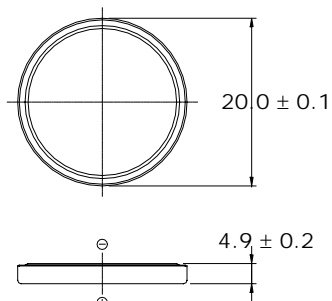
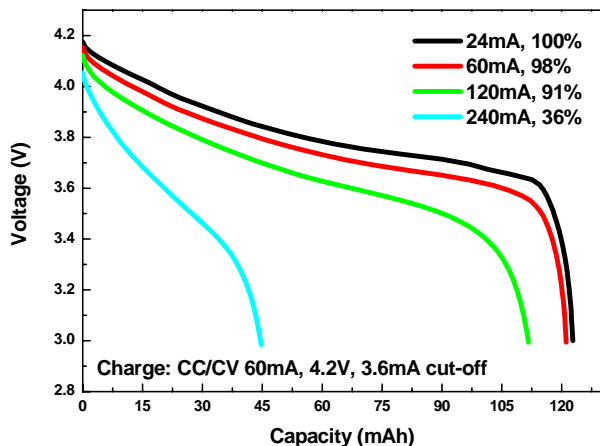


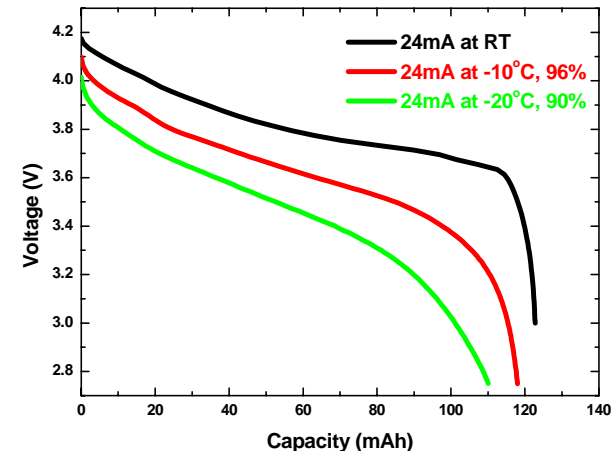
Dimension (mm) *1



Discharge Characteristics I



Discharge Characteristics II



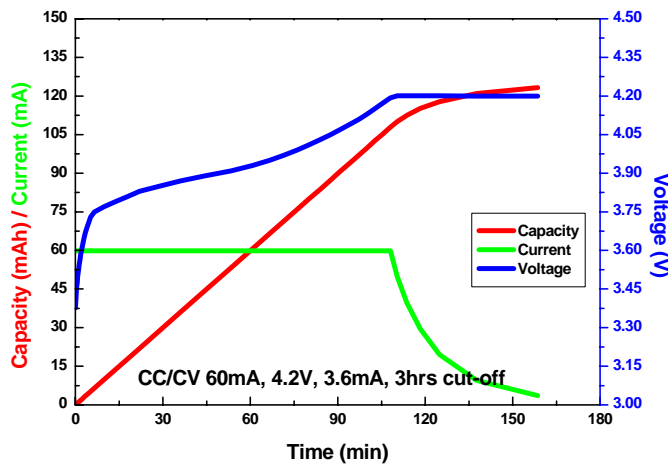
Specification

Nominal Voltage	3.7 V
Nominal Capacity *2	120 mAh
Dimension (mm)	4.9 x 20.0
Weight(Approx.)	4.2 g
Max. Discharge Current	2 CmA (240 mA)

*1 Dimensions of a fresh battery

*2 Discharged at 0.2CmA(24mA), 3V cut-off

Charge Characteristics



Cycle Life Characteristics

