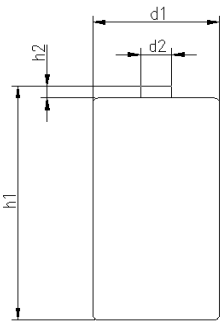


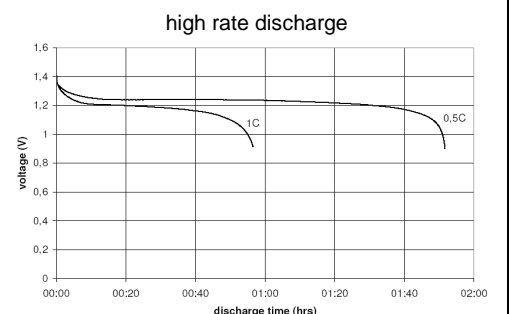
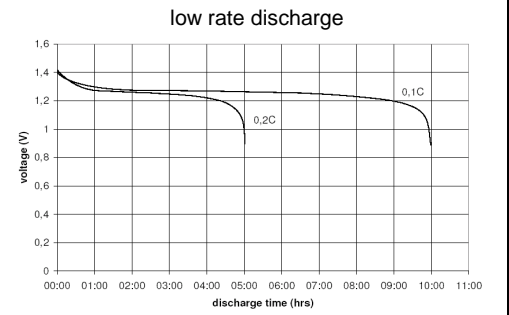
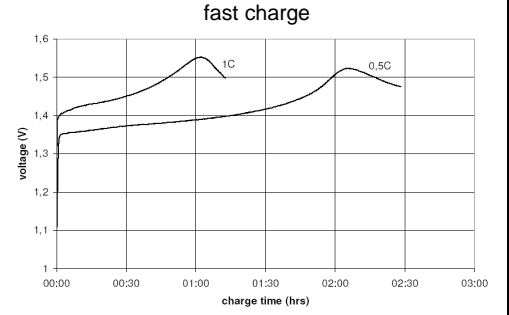
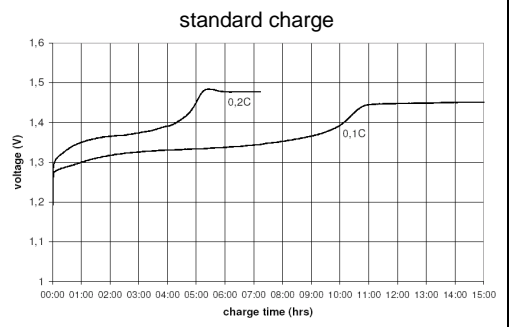
		Conditions	
<b>cell type:</b>		NiMH	
<b>cell size:</b>		C	
<b>nominal voltage:</b>	1.2	V	
<b>max. charge voltage:</b>	1.5	V at standard charge (0.1C / 20°C)	
<b>capacity</b>			
nominal:	4500	mAh	discharge at 0.2C
minimum:	4500	mAh	discharge at 0.2C
	4200	mAh	discharge at 1C
			1.0V end discharge voltage
			ta: 20°C
<b>max. continuous discharge current:</b>	6750	mA	ta: 0...45°C
<b>charge</b>			
standard charge:	450	mA	14....16hrs
quick charge:	1350	mA	4hrs
fast charge:	2250	mA	2.3hrs
recommended charge termination control parameters:	0...5	mV	- ΔV (-deltaV)
	0.8...1	°C	temperature rise per minute
	45...50	°C	TCO (temperature cut off)
trickle charge current:	45...150	mA	(recommended)
continuous overcharge: (less than 1 year)	≤ 450	mA	no conspicuous deformation no leakage
<b>internal resistance:</b> (impedance)	≤ 20	mΩ	at 1KHz battery fully charged
<b>life expectancy:</b>	≥ 500	cycles	acc. IEC standard
<b>self discharge</b>			
charge retention:	≥ 80	%	after 12 months storage at 20°C
<b>initial capacity:</b>	≥ 3150	mAh	within 30 days after delivery discharge at 0.2C
<b>ambient temperature range:</b>	0...45	°C	standard charge
	10...40	°C	fast charge
	0...45	°C	discharge (≥1C)
	- 20...65	°C	discharge (<1C)
	- 20...50	°C	storage (≤3months)
	- 20...40	°C	storage (≤6months)
	- 20...30	°C	storage (≤24months)

QCT1: 20/4300/20  
QCT2: 30/4200/20

mechanical specifications			
cell dimensions			
diameter d1:		25.6 - 1.0	mm
diameter d2:	max.	7.5	mm
height h1:		50.0 - 2.0	mm
height h2:	min.	1.5	mm
weight:		80 ± 4	g
blister card dimensions:		123 x 85	mm
blister card weight (incl. batteries):		168	g



**Diagrams**



	<b>ANSMANN Specifications for model:</b>	<b>C - 4500mAh low self discharge 2pcs blister package</b>
	data sheet no. / part no.	5035352
	supplier no.	701364
	author / date	Gramlich / 24.02.2012

Manufacturer reserves the right to alter or amend the design, model and specification without prior notice